

Emil Nolde

German, 1867–1956

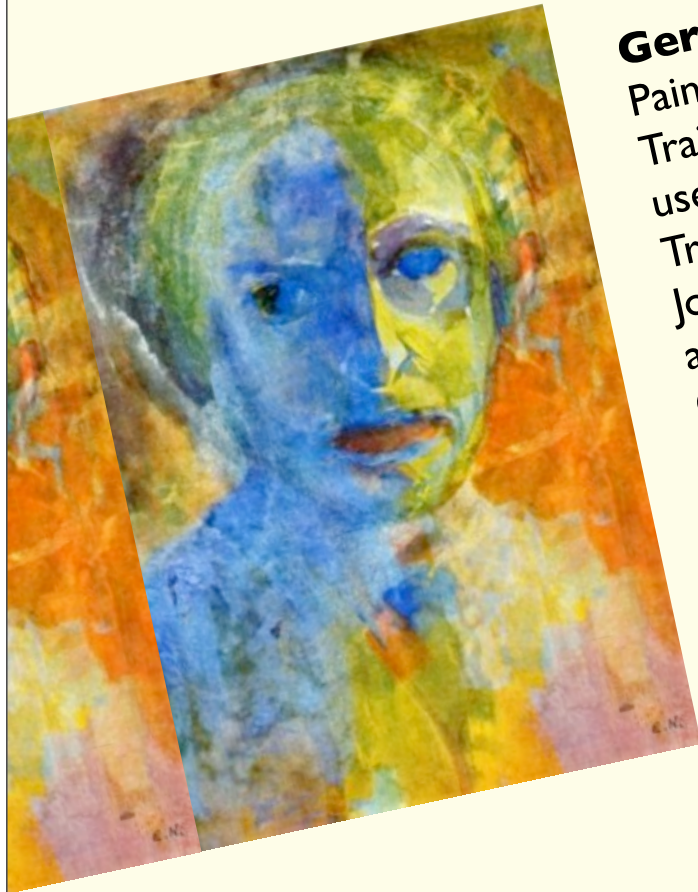
Painter, printmaker, and sculptor.

Trained as a wood carver but developed into a painter who used thick “imposto” brush strokes and bold color.

Traveled to New Guinea and made art based on what he saw. Joined “Die Bruke” for one year before he left after an argument with another member.

Often his work focused on “the primitive”, religious subjects and landscapes scenes.

Joined the Nazi party early on but Nazis would turn on him. 1,052 of his works were taken out of Museum collections (more than anyone else) by the Nazi party and forbid him to paint or make any art.



GERMAN
SELF PORTRAITS
EXPRESSIONIST